

Your microphone and camera are temporarily disabled.  
Questions and comments will be taken after the presentation.  
The meeting will be recorded.



**TOM PETTY PARK**

# Parking Lot Expansion

---

Neighborhood Workshop

July 2, 2025



# Workshop Agenda

---

## Workshop Agenda

- Project Overview
- Proposed Parking Expansion
- Project Timeline
- Q & A



# Project Overview

Size: 22.50 Acres

Features:

- Playground
- Restrooms
- Diamond Fields for Baseball/Softball
- Multipurpose Field
- Tennis Courts
- Dog Park
- Multiuse Trail
- Pavillion







# Project Overview

Tom Petty Park is characterized as a **Community Park** in the city's comprehensive plan. Community Parks are defined as **intensive-use, activity-based recreation areas that serve an entire geographic quadrant** and may include lighted sports courts and fields, pools, playgrounds, picnic areas, and off-street parking.





# Project Overview

---

## Ongoing Project – Tom Petty Park Pickleball Courts and Miscellaneous Improvements

- New Pickleball Courts
- New Shaded Seating Areas
- Trail Improvements and Extension
- Landscape Enhancements
- *Wildflower Garden*
- New Restroom Building
- New Multipurpose Field Lighting
- Lighting Upgrades for Tennis and Baseball
- Parking Lot Lighting
- *Surrounding land acquisition managed by urban forestry\**



# Project Overview

Tom Petty Park is highly active, and the current number of available parking spaces has been identified as insufficient to support existing programming and park usage.

Expanding parking capacity to better serve both current and future amenities has been a consistent priority for leadership within the Department of Parks, Recreation and Cultural Affairs since the project's inception.

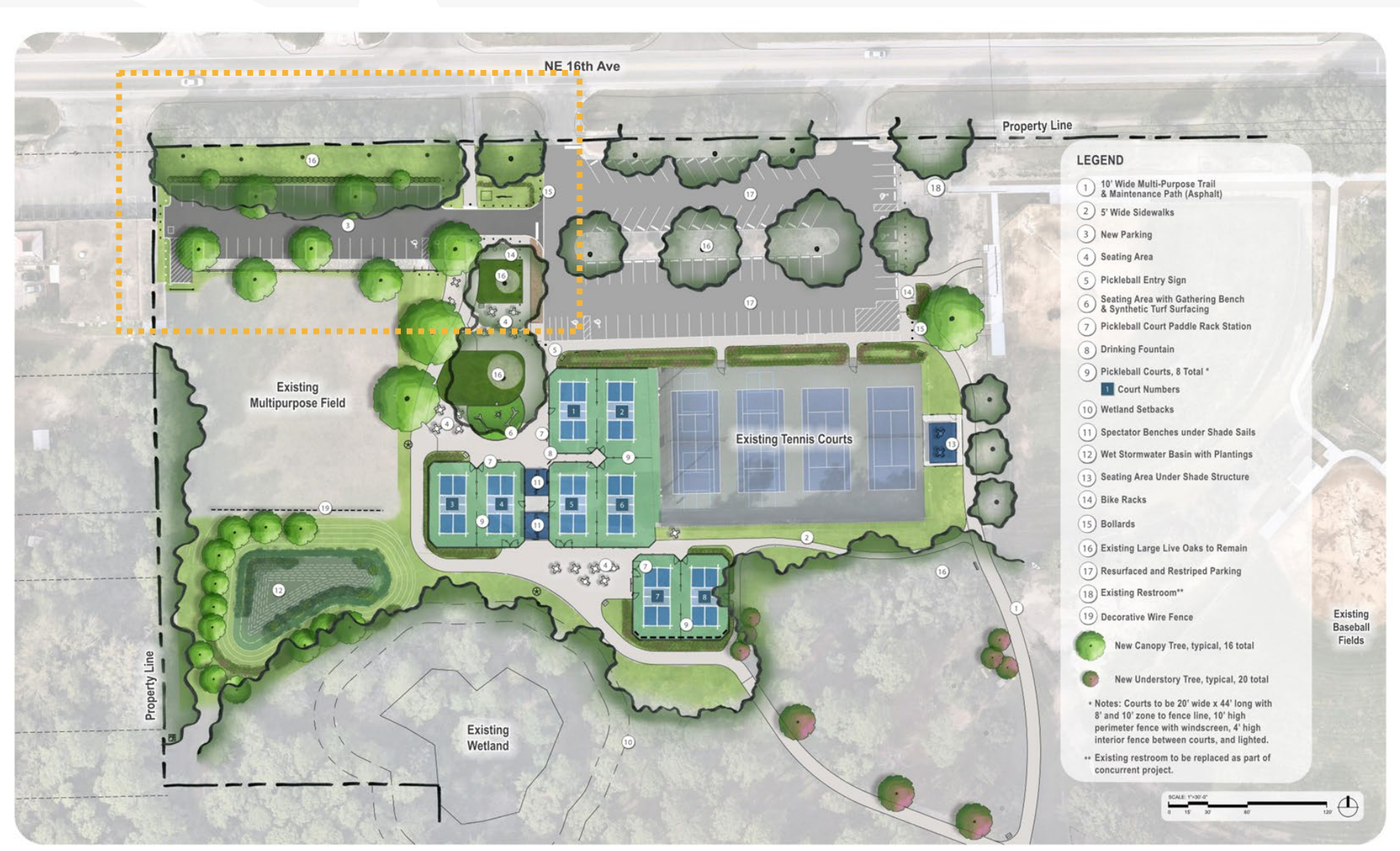
Park users have also expressed concerns about the addition of amenities without corresponding increases in available parking.







# Proposed Parking Expansion





# Proposed Parking Expansion

## Proposed Parking Expansion:

- 41 proposed parking spaces
- No tree impacts
- Landscape improvements
- New Sidewalk







# Proposed Parking Expansion



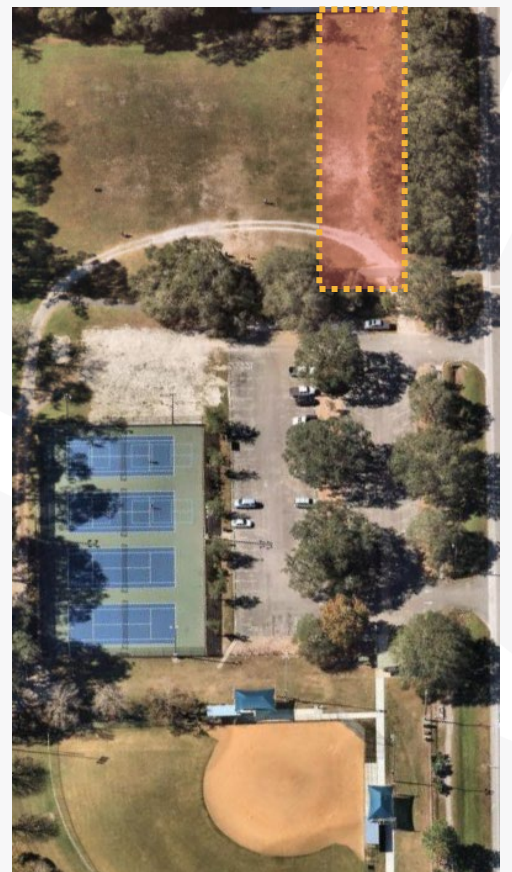
North



South



East



West





# Proposed Parking Expansion

## Site Photos







# Proposed Parking Expansion

## Site Photos

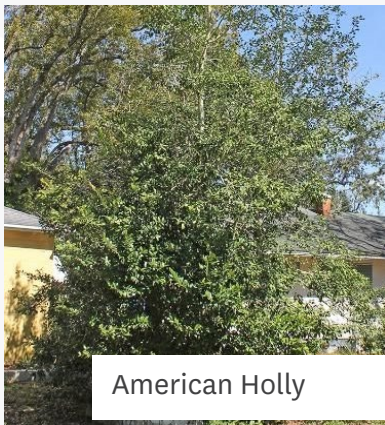
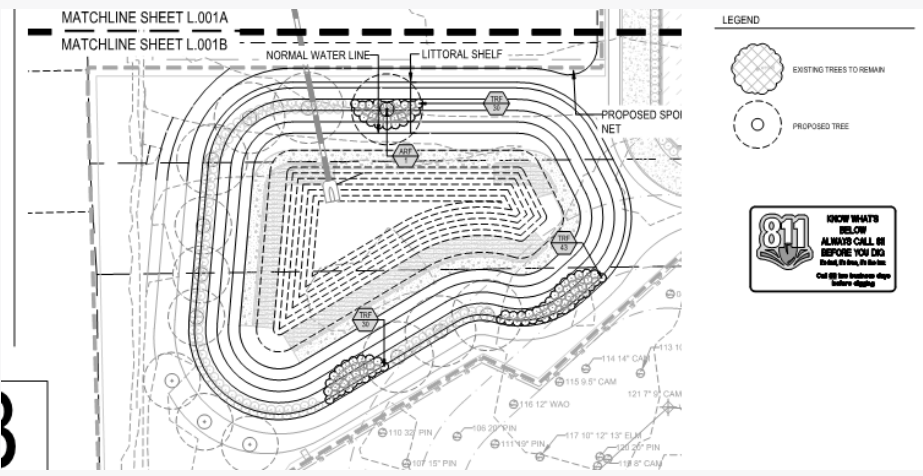
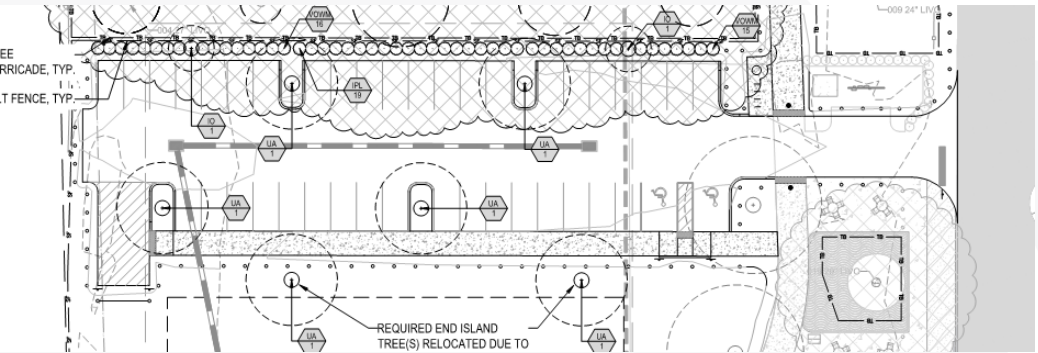






# Proposed Parking Expansion

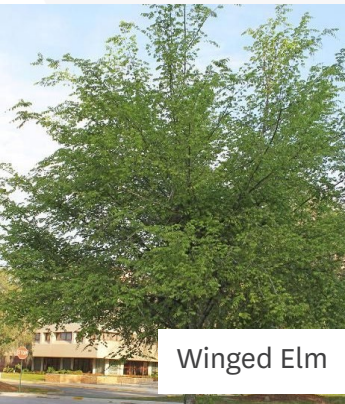
## Proposed Landscaping



American Holly



Florida Flame Red Maple



Winged Elm



Florida Gamagrass



Walter's Viburnum



# Project Timeline

---

## Current Timeline:

- Summer 2025 – Submit plans to the city for review.
- Fall & Winter 2025 – Permitting.
- Early 2026 – Construction.



# Q & A

## Q&A Guidelines

- Please **ask your questions first** so we can ensure all project-related inquiries are addressed within the available time.
- We will open the floor to **comments** after all questions have been answered.

Raise your hand

In the meeting controls at the top of the screen, select **Raise** .

If you Dialed in **press \*5** to Raise Your Hand.





# Q & A





# Contact Information

---

Rachel Mandell, AICP

Project Manager – Wild Spaces & Public Places

(352) 393-8544

[mandellrc@gainesvillefl.gov](mailto:mandellrc@gainesvillefl.gov)