

City of Gainesville Tom Petty Park Improvements



The City of Gainesville's Department of Parks, Recreation and Cultural Affairs and the Wild Spaces & Public Places program would like to provide an update on the proposed improvements at Tom Petty Park.

Design efforts have focused on balancing the needs of a wide variety of park users. While the northern side of the park includes active amenities such as sports courts, ball fields and parking, the southern half is more forested with walking paths, a playground and dog play areas. To maintain this harmony, the design proposes that the pickleball courts utilize the open space between the multi-purpose field and the tennis courts to minimize the impact of the courts on wooded areas.

Close oversight from the City of Gainesville's city arborist and Urban Forestry staff have guided design decisions to ensure the health of the park's urban forest.

The large heritage oak at the southwest corner of the parking lot will remain a focal point of the park. To illustrate its grandeur, the design highlights the tree as the signature element at the west pedestrian entrance.

Current designs for the community park include:

- Removal of the existing racquetball courts
- Addition of eight dedicated pickleball courts
- Addition of seating areas with a pavilion and site furnishings
- Addition of a pedestrian entrance from the Northeast 16th Ave. crosswalk
- Purchase and installation of a community bulletin board/kiosk
- New benches and entrance improvements at both dog parks
- Re-routing of the multi-purpose trail for ADA accessibility
- Renovating and enlarging the restrooms
- Lighting the parking lot and the main north-south trail
- Upgrades to the landscape and code-required modifications to the park's stormwater management basins

Additional details about the project:

Landscaping planning

Several trees at the southwest corner of the tennis courts have been inspected by the city arborist. Considered to be in poor health or low quality, they may need to be removed for the project with the following mitigation plan:

- Planting far more trees than are removed
- Planting fruit trees to complement the city's Edible Groves program
- Adding a wildflower/pollinator garden to increase native biodiversity and enhance the beauty of the space

Accessibility

This project makes necessary upgrades to allow all areas of the park to meet federally mandated guidelines for accessibility. The park is not yet fully ADA accessible.

Multi-use field

High-efficiency LED lighting is being added to the multi-use field to allow longer hours of play. The field size will remain the same (approximately 160' x 280').

To provide feedback on the proposed upgrades or make suggestions, please contact Pete McNiece at McNiecePR@gainesvillefl.gov or 352-393-8544.

Anticipated construction timeline:

August 2024
Demolition of racquetball courts

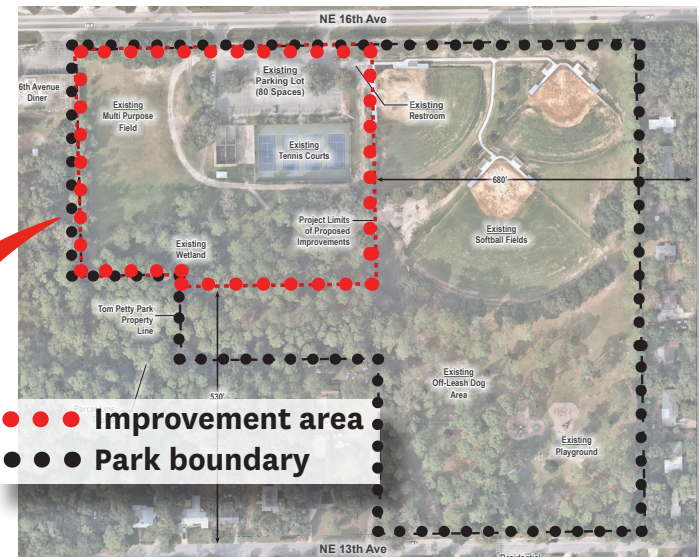
January 2025
Begin construction*

*Barring unforeseen permitting delays

Legend

1. 12' wide multi-purpose trail & maintenance path
2. Maintenance access
3. Event staging & food truck parking
4. Seating area & pavilion with accessible surfacing
5. Pickleball entry sign
6. Seating area with gathering bench & synthetic turf surfacing
7. Pickball court sign-up board and paddle rack
8. Drinking fountain
9. Pickleball courts
10. 50' minimum wetland buffer
11. Spectator benches under shade sails
12. Stormwater basin
13. Seating area under shade sail
14. Bike racks
15. Accessible walk connections to parking and restroom
16. Existing large live oak to remain
17. 20'x30' multi-use concrete pad

Tom Petty Park footprint



Details of the improvement area

