

# Woodlawn 738 D



Attached or Detached  
Accessory Dwelling Unit

Bedrooms: 1

Bathrooms: 1

ADA Accessible: Yes

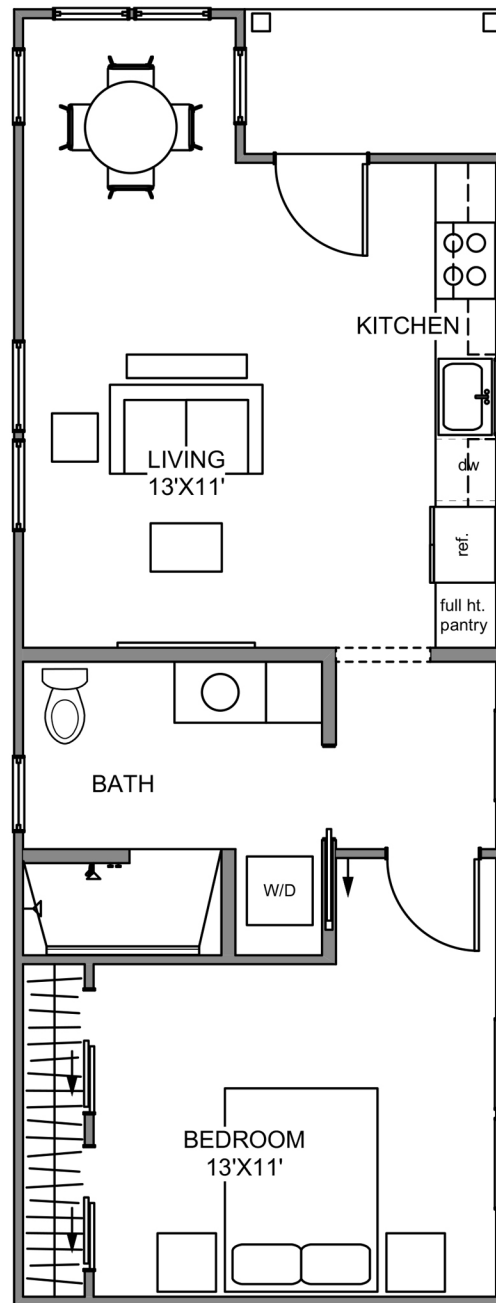
Conditioned SF: 643

Unconditioned SF: 40

Total SF Under Roof: 683

Ceiling Height: 9'

Dimensions: 16'-0" x 42'-6"



With a sunny breakfast nook, spacious bedroom and sizeable galley kitchen, this one bedroom, one bath home has everything you need. The unit is also accessible making it perfect for aging family.