

N|V|5



COMMUNITY WORKSHOP #2 PARTICIPANTS' FEEDBACK

T.B. McPherson Recreation Complex
Building Renovation & Master Plan

Date of Workshop: April 9, 2026



T.B. McPherson Recreation Complex: Building Renovation and Master Plan

Attend the Community Workshop!

When? Thursday, April 9
6-7:30 p.m.

Where? T.B. McPherson Center
1717 SE 15th St.

The City of Gainesville is planning improvements at the **T.B. McPherson Recreation Complex** at **1717 SE 15th St.**, and want to hear your input. Please join us **for the second community workshop.**

The purpose of this workshop is to **receive community input** on draft conceptual plans to the T.B. McPherson Center and park improvements.

Workshop Format:

Participants will have the opportunity to hear a presentation on the proposed renovations and site improvements, as well as provide feedback and share their perspectives on the proposed changes.

Want to learn more? Scan the QR code to the right to visit the project webpage, visit <https://tinyurl.com/tbmcpherson> or reach out to Rachel Mandell at 352-393-8544 or, Mandellrc@gainesvillefl.gov



Project Timeline



City of
Gainesville
Parks, Recreation and Cultural Affairs

Community Workshop #2 Outreach

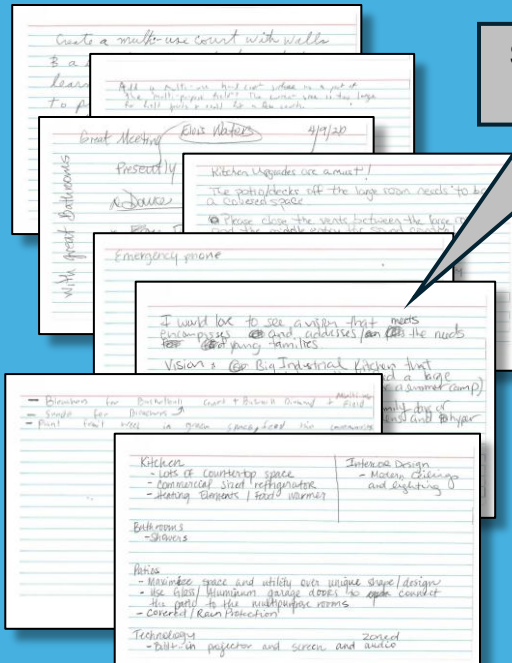
- Community Workshop #2 was held on April 9th, 2026, to gather public input on the draft conceptual plans for the building renovation and park improvements.
- This was the second of three community workshops required by the Project Scope of Services.
- 580+ postcards were mailed via USPS, 5,900+ emails were sent out through Constant Contract.
- Flyers were provided as handouts and posted to inform the public about the upcoming workshop.
- Four (4) Stakeholder meetings were held prior to Community Workshop #2. (Refer to the “Stakeholder Meetings Summary” document on the project website for a summary of input.)

**Community Workshop #2
Agenda**
T.B. McPherson Recreation Complex

6:00 - 6:15
Arrival + Sign-In

6:15 - 7:00
Presentation + Q&A

7:00 - 7:30
Breakout Tables



Community Workshop #2

Format & Participation

- **Location/Time/Date:** T.B. McPherson Center, 6pm to 7:30pm, Thursday, April 9, 2026
- **Attendance:** 37 names on sign-in sheet (many representing groups). Approximately 60+ total attendees.
- **Format:** Based on public feedback from Community Workshop #1 (Dec. 11, 2025), the format for Workshop #2 was a **Presentation with Q&A**.
 - To solicit input from attendees who did not prefer to comment in a large group setting, **Breakout Tables** were open at the end of the meeting and **Index Cards** were offered for optional written comments.
 - Attendees were able to talk with City Staff and Project Team members until 8pm. By the end of the meeting, **nine (9) Index Cards** with written feedback were submitted.



PHOTO OF WORKSHOP #2 (April 9, 2026)

Workshop Presentation

Building Renovation: Preferred Design Concept

Concept 2 was identified by Community as the preferred layout.

Additional Key Discussion Points:

Kitchen:

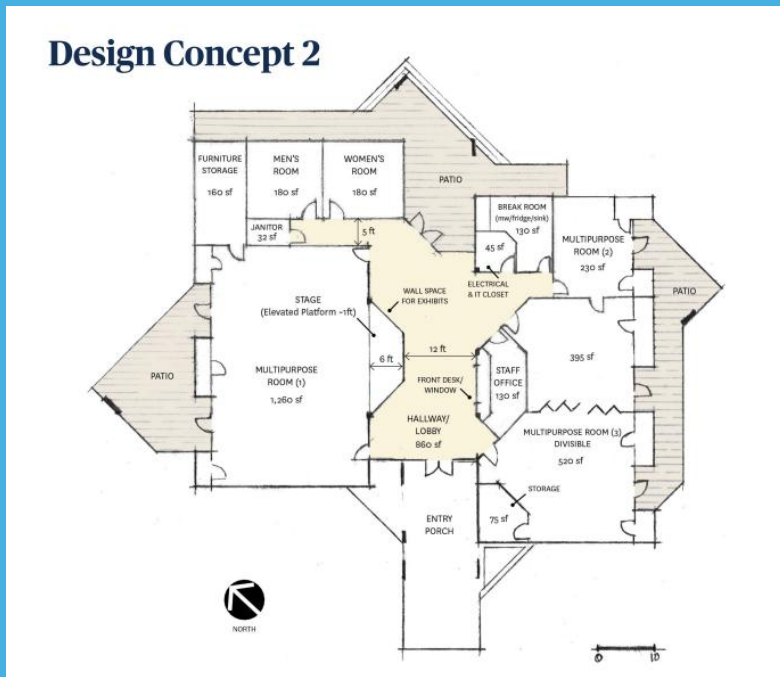
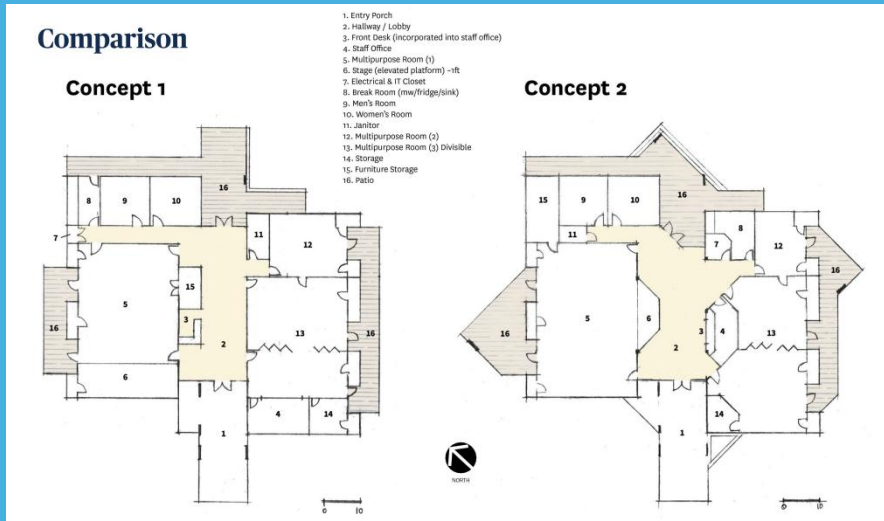
- Strong demand for upgraded kitchen, seen as essential for gathering & hosting.
- Current setup noted as inadequate.
- Possible Improvements to include more counter space & warming equipment

Stage:

- Preference for a central stage.
- Stage should support multiple uses (performances, events, baby showers, etc.).

Additional Feedback:

- Desire to make the facility a true destination for youth and families.
- Concerns that without improvements (e.g., shade, amenities), users will choose other facilities



Workshop Presentation

Building: Possible Exterior Façade Update

Façade Design Approaches



Alongside the interior renovation, façade upgrades are under consideration – bringing new awareness and curb appeal to the facility. These could include:



1. Non-Structural Elements

- Metal frame and mesh cladding
- Façade veil; decorative panels
- Fabric; awnings; canopies



2. Paint and Accents

- Painted brick & veneers
- Color accents
- Alternative materials



3. Lighting; Entry & Wayfinding

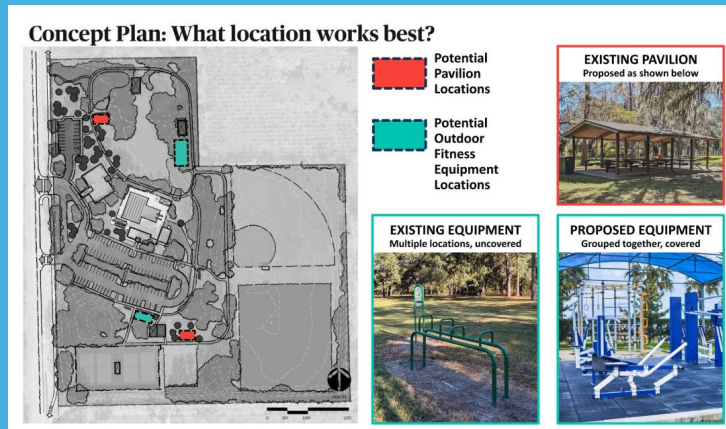
- Gateway and entry ‘wow factor’
- Signage upgrades
- Lighting: accent; wall wash; LED

In addition to the interior renovation, possible exterior façade upgrades are under consideration. These could possibly include:

- Non- Structural Elements:
 - Metal frame and mesh cladding
 - Façade veil, decorative panels
 - Fabric awnings, canopies
- Paint and Accents:
 - Painted brick & veneers
 - Color accents
 - Alternative materials
- Lighting - Entry & Wayfinding:
 - Gateway and entry ‘wow factor’
 - Signage upgrades
 - Lighting: accent, wall wash, LED

Workshop Presentation

Recreation Complex: Feedback on Pavilion Location



FEEDBACK FOR PAVILION NEAR PLAYGROUND



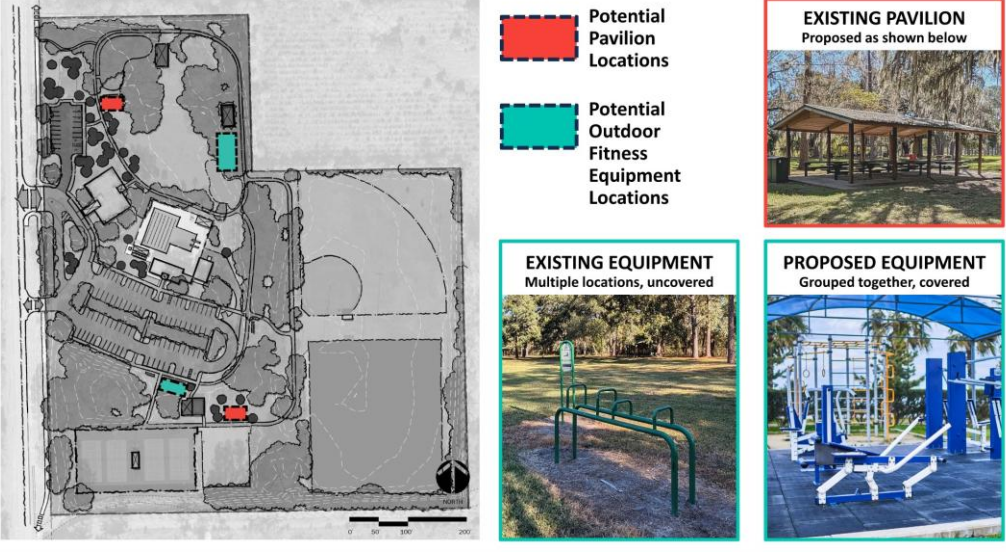
FEEDBACK FOR PAVILION NEAR BASKETBALL COURT

- Attendees were asked about **what location would work best for the proposed pavilion**. They were asked to choose, by show of hands, whether a new pavilion should go near the **existing playground** or near the **existing basketball court**.
 - When asked about a pavilion near the playground, 2 people raised their hands.
 - When asked about a pavilion near the basketball court, 7 people raised their hands.
 - One participant suggested that pavilions in both locations would be the most useful, and several other people nodded their heads.
 - This echoes previous public input that additional seating and gathering areas are desired.

Workshop Presentation

Recreation Complex: Feedback on Pavilion Location

Concept Plan: What location works best?



(ABOVE) PRESENTATION SLIDE FROM 4/9/26 WORKSHOP

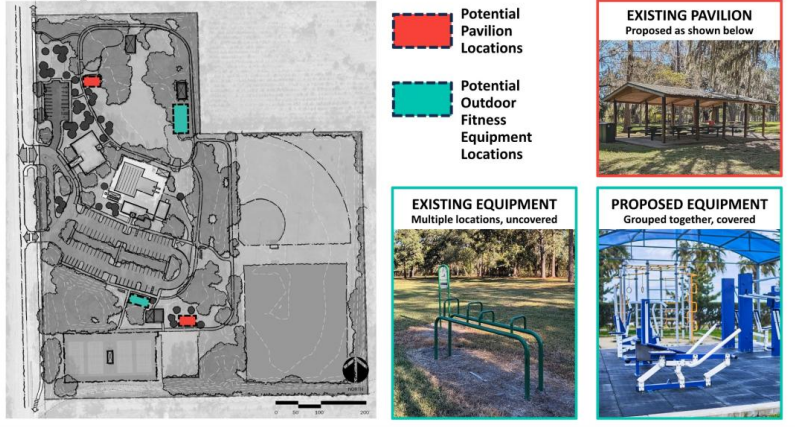
Want a pavillion near tennis + basketball courts

prefer pavillion near building

(ABOVE) EXCERPTS OF INDEX CARD COMMENTS
FROM 4/9/26 WORKSHOP

- Comments from the Index Cards provided additional information on **pavilion location**:
 - One person wrote that they “want a pavilion near tennis and basketball courts”.
 - One person wrote that they “prefer the pavilion near building.”
 - Both pavilion locations are desired and can serve different user groups in the community.

Concept Plan: What location works best?



Workshop Presentation

Recreation Complex: Feedback on Outdoor Fitness Equipment

- Attendees were asked **whether the existing outdoor fitness equipment should remain in multiple locations, uncovered, or if it should be grouped together and covered.** They were once again asked to choose by show of hands.
 - When asked if the fitness equipment should be in multiple locations, uncovered, 7 people raised their hands.
 - When asked if the fitness equipment should be grouped together, covered, 4 people raised their hands.
 - One participant suggested that both options would be useful. There could be one covered fitness area and also a series of individual pieces of equipment along the new walking trail route.



FEEDBACK FOR EQUIPMENT IN MULTIPLE LOCATIONS, UNCOVERED

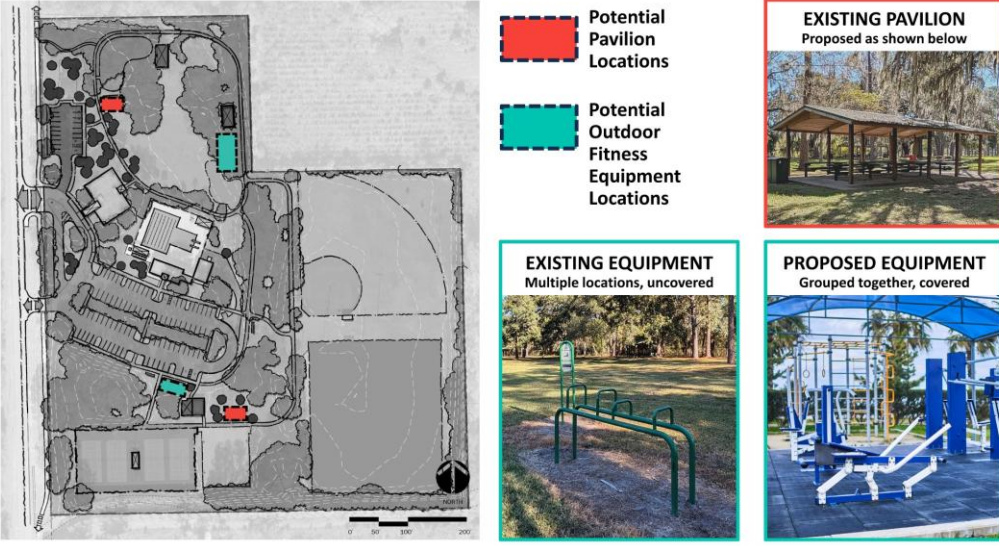


FEEDBACK FOR EQUIPMENT GROUPED TOGETHER, COVERED

Workshop Presentation

Recreation Complex: Feedback on Outdoor Fitness Equipment

Concept Plan: What location works best?



(ABOVE) PRESENTATION SLIDE FROM 4/9/26 WORKSHOP

together.
Kids / parents could ~~have~~ attend group fitness
in the field. Make it a community gathering
in health and fitness.

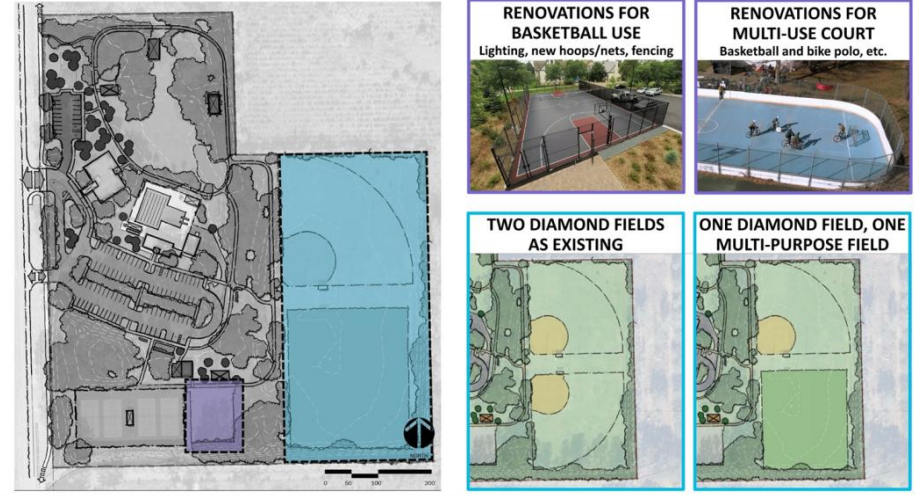
(ABOVE) EXCERPT OF INDEX CARD COMMENTS
FROM 4/9/26 WORKSHOP

- Additional comments on Fitness Equipment:
 - One person commented during the Q&A that having fitness equipment near the playground would mean “being close to the kids.”
 - One person wrote on an Index Card that they want the park design to “make it a community gathering in health and fitness.”
 - One person commented that fitness equipment near the BBQ area in the open greenspace was preferred.

Workshop Presentation

Recreation Complex: Feedback on Basketball Court Renovation

Concept Plan: Example Changes



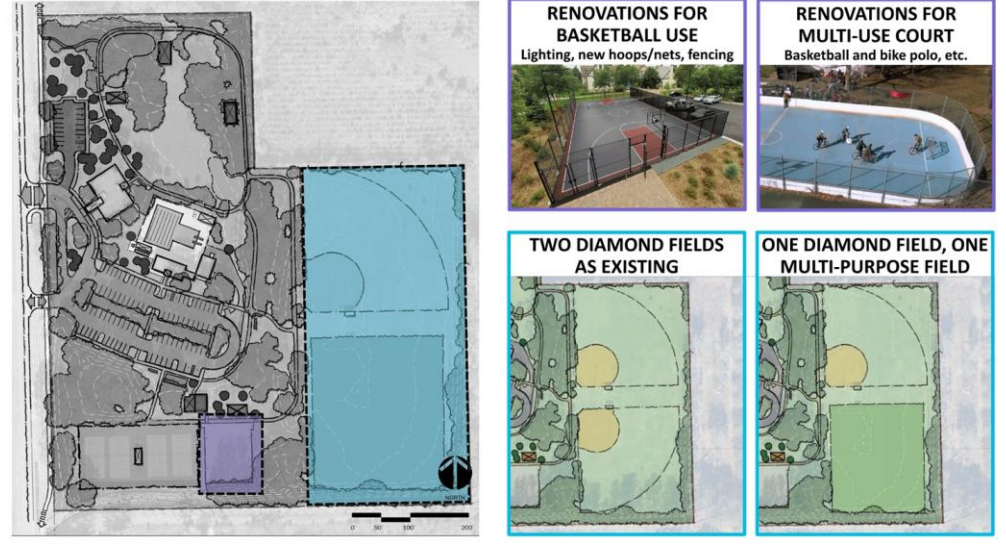
FEEDBACK FOR COURT RENOVATIONS

- Attendees were asked if they would prefer to see the existing basketball court renovated for:
 - Basketball Use** (lighting, new hoops/nets, fencing)
 - OR
 - Multi-Use Court** (improvements basketball plus other sports, like bike polo, etc.)
- Should basketball court should be renovated primarily for basketball use? 15 people raised their hands.
- Should basketball court should be renovated as a multi-use court? 0 people raised their hands.
- Concern was expressed that if the courts were “multi-use”, that access as “first-come, first-served” would result in limited use for everyone. **Scheduled use** was mentioned but lacked support.

Workshop Presentation

Recreation Complex: Feedback on Diamond Field Renovations

Concept Plan: Example Changes



(ABOVE) PRESENTATION SLIDE FROM 4/9/26 WORKSHOP

Need covered seating near softball court

— Bleachers for Basketball court + Baseball Diamond + Multi use
— Shade for Bleachers ↗

Add a multi-use hard court surface as a part of the "multi-purpose field"? The current size is too large for field sports + could fit a few courts.

(ABOVE) EXCERPTS OF INDEX CARD COMMENTS FROM 4/9/26 WORKSHOP

- Attendees were asked if they would prefer to keep the two existing diamond fields or if they would like one diamond field and one multi-purpose field.
 - One person commented that the community does not play softball anymore and that football would be an appropriate use for the fields. They added that there are no permanent football fields in the area.
 - One person wrote on an index card “need covered seating near softball court”. Another person wrote “Bleachers for basketball court + baseball diamond + multiuse field” and “shade for bleachers”.
 - One person wrote to “add a multi-use hard court surface as a part of the multipurpose field”.

Workshop Presentation

Q & A: Additional Comments

- Discussion Items during Q & A:

Q: Concern about too many features planned for the space and whether that might affect parking?

A: No new amenities are being added to the park. Improvements to existing facilities will meet but not exceed capacity.

Q: Parking on SE 15th Street during big events is not safe, and the road is in poor condition. How many new paved spaces are proposed in the area near the playground?

A: SE 15th Street is a County road (not owned by the City). The segment adjacent to the park is scheduled for pavement rehabilitation in 2028. The proposed newly paved area would add approximately 14 spaces.

Q: What is the age and condition of the pool? Could the pool be heated?

A: The pool is not part of this master planning effort; all City pool facilities will be comparatively assessed in the future. This pool is not currently planned for heated/year-round use due to staffing and cost, but community desire has been noted by Parks & Recreation to be used in future pool evaluations.



Workshop Presentation

Q & A: Additional Comments

- Additional comments during Q & A:

- Desire to make the park a true destination for youth and families
- Need for more water fountains throughout the park
- Fields are not heavily used right now
- Concern that without improvements, users will choose other facilities
- Requests for equitable investment compared to other parks (shade structures, seating, other amenities)
- Concerns about discussing park improvements if funding has not been allocated
- Suggestion that park funding can be secured if there is strong collective demand
- Strong desire for adequate/appropriate kitchen facilities to serve large community gatherings, camps, meetings, family reunions
- Community prefers large group Q&A, not breakout sessions



City of Gainesville | T.B. McPherson Recreation Complex: Building Renovation and Site Master Plan

Index Cards

Additional Written Feedback

Create a multi-use court with walls & a smooth surface to have kids learn to ride bicycles, to rollerskate, to play on a safe hard court. Other sports, such as bike polo, skateboarding, etc can be played as well, however, the main focus is community play in a safe space.

Add a multi-use hard court surface as a part of the "multi-purpose field"? The current size is too large for field sports & could fit a few courts.

- In addition to the Q&A and breakout table discussions, workshop participants also had the option to write down comments on Index Cards for the design team.
- Index Card comments will be incorporated with other feedback to guide design revisions.

Great Meeting Elois Waters 4/9/20

With great Bathrooms

- Presently I worked with #1 groups
- * Dance Ministry - about the plan 2 for the stage
- * ~~Eye~~ Exercise Group - Plan 2
- * Youth Tutoring - Plan 2
- * Sewing Groups - Plan

I would love to see a vision that meets encompasses and addresses the needs of young families.

Vision: A Big Industrial Kitchen that would be able to feed a large group (for example for a summer camp)

This facility could have family days or nights. (Say, flyer for carver gardens and hyper local households)

Partner with farmers and shop and have food boxes available. Families could prep/cook together.

Kids / parents could attend group fitness in the field. Make it a community gathering in health and fitness.

Tony & Leann
asrlt@zqob@gmail.com
BBF.dreams.com

Index Cards

Additional Written Feedback

- Bleachers for Basketball Court + Baseball Diamond + Multi use Field
 - Shade for Bleachers
 - Plant fruit trees in green space, feed the community

Kitchen Upgrades are a must!

The patio/decks off the large room needs to be a covered space.

Please close the vents between the large room and the middle entry for sound control!

I like a version of concept #2

Too much wasted space still in entry way

I want paved parking near playground

Need covered seating near softball court

Want a pavillion near tennis + basketball courts

Emergency phone

Kitchen

- Lots of countertop space
- Commercial sized refrigerator
- Heating Elements / Food warmer

Interior Design

- Modern Ceilings and lighting

Bathrooms

- Showers

Patios

- Maximize space and utility over unique shape/design
- use Glass/Aluminum garage doors to open connect the patio to the multipurpose rooms
- Covered / Rain Protection

Technology

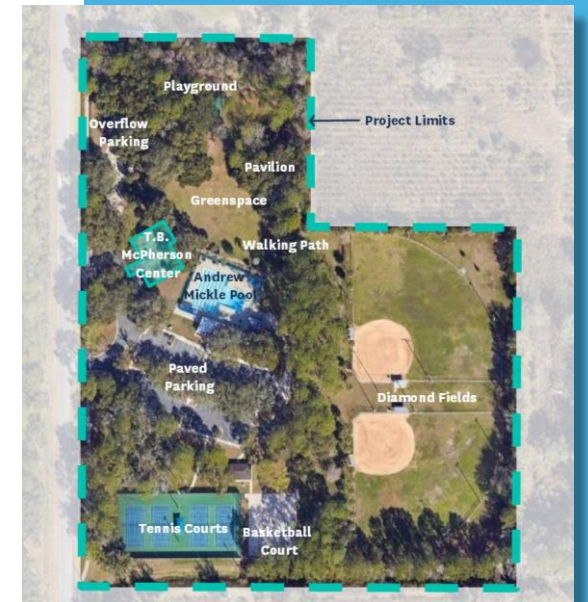
- Built-in projector and screen and audio

- In addition to the Q&A and breakout table discussions, workshop participants also had the option to write down comments on Index Cards for the design team.
- Index Card comments will be incorporated with other feedback to guide design revisions.

Community Workshop #2

8 Key Themes

- 1. Building/Park Connection:** Strengthen pedestrian circulation between building and park. Develop patio extensions from the building to support events, programming, and enhance visibility from the park. Outdoor connection “expands” building use. Integrating building with park maximizes the 15-acre property.
- 2. Advance Concept 2 Layout:** Include a platform/stage in the large multi-purpose room to support multiple uses/events; acoustics also need improvement. Consider exterior façade changes to reflect interior renovations and park improvements.
- 3. “Kitchen”/Food Prep Area:** Maintain and improve the important role and function of this area for community meals, camps, family gatherings, events. Add more counter space, plenty of fridge space, and provide appropriate food warming options.
- 4. Multi-Use Flexible Recreation:** Focus on year-round, high-use facilities, like football or multi-purpose fields; renovations to courts (prioritizing basketball). Fitness equipment can serve different users grouped and covered as well as along the walking trail.



Community Workshop #2

8 Key Themes

- 5. Comfort & Safety = Usability:** Additional seating, gathering space, and shade is essential (pavilions, bleachers, etc); lack of these is a significant barrier to use. Exterior lighting and other safety improvements (emergency phone suggested) are crucial to increase use of the park. Better lighting, more bleachers, shot clocks, more water fountains bring the facilities up to the level of other City parks. Paved parking near the playground and greenspace is desired.
- 6. Pool Improvements:** The pool should be evaluated for accessibility, year-round use, and future improvements. (Note: Public input regarding the pool is included in the data for this project. Analysis/recommendations for pool improvements are not included in this planning effort and will be conducted separately.)
- 7. Honor History & Community:** Support for historical displays in the building and elsewhere in the park; selection of design elements should reflect community significance.
- 8. Inclusive & Transparent Public Engagement:** Preference for workshops with presentations and large-group discussions. Community wants meaningful involvement, not just information.

